



# Safer Telford and Wrekin Partnership Community Safety Strategy 2024/25 - 2026/27

# Contents

**Foreword**

**3**

**Background**

**5**

**Telford and Wrekin: the place**

**10**

**Governance**

**11**

**Our vision and priorities**

**12**

# Foreword

**Residents tell us that tackling crime and anti-social behaviour is an absolute priority for them because of the impact it has on their lives.**

Whilst progress has been made reducing crime and anti-social behaviour across the borough, some of our neighbourhoods and different communities continue to be disproportionately affected by the issue.

Multi-agency working is key to tackling crime and anti-social behaviour by ensuring our resources are used collaboratively to achieve the greatest impact. This is evident in our Safer, Stronger Communities Programme which has been at the forefront of driving the reduction in crime and anti-social behaviour that we have seen in the borough. A programme which has been supported by targeted investment by Telford & Wrekin Council and the Office of the West Mercia Police and Crime Commissioner.

This strategy restates our commitment to partnership working and is supported by Telford & Wrekin Council, West Mercia Police, NHS Shropshire, Telford & Wrekin, the Probation Service, Youth Justice and Shropshire Fire and Rescue Service.

In developing this Safer Telford & Wrekin Strategy, informed by need analysis and community engagement, our focus will continue to be on the three priorities adopted in our 2020/21 Community Safety Strategy. These are:

- tackling Child Exploitation and Child sexual Exploitation;
- reducing the harm and impact of Domestic Abuse; and
- addressing crime and antisocial behaviour in high harm areas.

In addition, we will adopt two new priorities:

- addressing serious youth violence; and
- reducing deaths and serious injury on our roads.

We have set out how we will drive these priorities forward, how we will work together and the governance arrangements to ensure robust oversight of progress.

Delivering these three priorities will make a significant contribution to “Vision 2032” our shared long-term plan for the borough, and its ambition that **“all neighbourhoods are connected, safe and clean”**.



**Superintendent Edward Hancox**

West Mercia Police  
Community Safety Partnership  
Board Chair



**Councillor Kelly Middleton**

Telford & Wrekin Council  
Cabinet Member for Healthier,  
Safer & Stronger Communities  
and Partnerships



**Councillor Raj Mehta**

Telford & Wrekin Council  
Cabinet Member for Inclusion,  
Engagement, Equalities & Civic  
Pride

# Background

**Section 6 of the Crime and Disorder Act 1998 requires local partners to work together to implement strategies to tackle crime, disorder and antisocial behaviour in their communities. This is based on the principle that no single organisation can address all drivers of crime and antisocial behaviour, and that effective partnership working is vital to ensuring safer communities.**

In Telford & Wrekin, the Community Safety Partnership Board has been created to deliver this responsibility. This brings together representatives from Telford & Wrekin Council, West Mercia Police, NHS Shropshire and Telford & Wrekin and the Probation Service, Youth Justice and Shropshire Fire and Rescue Service.

Informed by a needs analysis, in 2021 the Partnership adopted a new strategy which focussed on three priorities. These were:

- Child Exploitation
- Domestic abuse and violence
- To tackle crime and antisocial behaviour in the areas of the borough with the highest harm rates.

In addition to these priorities, the partnership has duties to:

- Prevent individuals becoming involved in serious organised crime and reducing serious violence
- Combatting the misuse of drug, alcohol and other substances
- Implement a strategy for reducing reoffending



## Action and Progress Since 2021

### Child Exploitation

In 2021, child exploitation (“CE”) was adopted as a priority due to ongoing community concern about the issue with a particular reference to child sexual exploitation (“CSE”). This was a joint priority with the Safeguarding Children Board with each having a specific focus:

- **Safeguarding Children Board** – ensuring that those at risk and those who are a victim of CE are identified and safeguarded and protected.
- **Community Safety Partnership** – to take action to disrupt exploitation, identify perpetrators and prosecute them.

In 2018, Telford & Wrekin Council commissioned an independent inquiry to explore concerns about historic cases of CSE and current practice by agencies to identify and safeguard those at risk and victims of CSE.

In July 2022, the Inquiry published its report which made 48 recommendations to be addressed through joint working by Telford & Wrekin Council, West Mercia Police, NHS Shropshire, Telford & Wrekin and the Office of the West Mercia Police & Crime Commissioner.

On publication of the report the Council made a commitment to work with three lived experience consultees to shape the work by partners to implement the recommendations. Their work has been pivotal to ensuring implementation has been meaningful and had real impact on changing policy and practice. In March 2024, the Chair of the Inquiry undertook a review of progress against the recommendations and publish his report in July 2024, recognised the significant progress that the Telford & Wrekin Council, West Mercia Police, the Office of the West Mercia Police & Crime Commissioner and the ICS Shropshire, Telford & Wrekin have made implementing the recommendations. Concluding that 38 had been implemented in full, with a further four in progress and that five were unable to be implemented without legislative or national policy change.

Since the 2021 Community Safety Partnership strategy adopted the priority of CE, significant progress has been made on developing policy and practice including:

- The adoption of a revised Child Exploitation strategy that is focused on “contextual safeguarding” to address abuse and the risk of outside the home;
- Revision of the Children Abused Through Exploitation pathway which sets out how those at risk and victims of child exploitation will be supported and safeguarded. It integrates contextual safeguarding and statutory child protection procedures.
- Development of an “explore more” document to support front-line practitioners in identifying CSE to the ensure victims and those at risk are safeguarded and receive the most appropriate support

- Revised approach to the “national referral mechanism” – to ensure that those children and young people who are at risk of modern slavery receive the life-long support to which they are entitled.
- Enhanced our understanding of CSE within the borough through the development of an annual profile which explores trends in the cases and perpetrators.
- Launched a “see something, say something” campaign to raise awareness of the signs of exploitation and how this should be reported to the relevant authorities. This compliments a CSE awareness programme that each of the three statutory safeguarding partners has rolled out to practitioners.

## Domestic abuse

The 2022 Domestic Abuse Act placed new duties on local authorities to support those at risk and victims of domestic abuse, with a particular emphasis on the provision of safe housing. In line with the requirements of the act, the Council and its strategic partners established the Domestic Abuse Local Partnership which then commissioned a review of domestic abuse services and support in the borough by the charity SaferLives. This work was informed by a new domestic abuse needs assessment.

This review led to the development of new Domestic Abuse Strategy being adopted in 2022 which was then refreshed in 2023. Cranstoun were commissioned to deliver a new domestic abuse service in partnership with West Mercia Women’s Aid. This is an integrated service for victims and their families working to ensure that those affected by domestic abuse can access the help and support they need, when they need it, and to reduce the incidence of domestic abuse in our communities.

In 2023, a domestic abuse forum was successfully created to:

- raise awareness and understanding of domestic abuse amongst the general public with the aim of reducing tolerance of abuse towards women, men and children, and to educate and inform young people, to enable them to construct and maintain relationships built on trust and mutual respect.
- to monitor the landscape and ensure best practice is shared.
- to create actions and enable implementation to improve access to services and support.
- to recruit, provide training and support Community Ambassadors/Champions so they can cascade the information to others.
- to ensure the voices of victims and survivors of domestic abuse is heard.
- to provide information and feedback and receive from the DALP.

## To tackle crime and antisocial behaviour in three areas of the borough with the highest harm rates.

Informed by needs analysis, the initial geographic focus of this priority were three areas, each with significant levels of social deprivation and crime and anti-social behaviour:

- Sutton Hill, Brookside and Woodside
- Dawley and Malinslee
- Arleston

In April 2021 the Council committed £2m to fund a new Safer & Stronger Communities Programme supported by £0.5m from the West Mercia Police and Crime Commissioner to deliver an investment programme to tackle crime and anti-social behaviour hot spot areas over a 2-year period. Reporting to the Community Safety Partnership, a Building Safer, Stronger Communities Partnership Board was established to deliver this programme.

The work of the Board in each area was informed by neighbourhood plans developed through engagement and consultation with the local community to identify key practical actions, examples include:

- Sutton Hill – through funding secured through the Safer Streets Fund the installation of additional CCTV and street lighting and housing enforcement undertaken against both tenants and landlords for anti-social behaviour.
- Brookside – a Safer Streets Fund project focused on 150 identified houses to improve security including the installation of alley gates, additional locks on doors and windows and the installation of CCTV and street lighting
- Woodside – quad and motorbike barriers were installed to reduce the use of motorcross bikes and a youth club was re-established to engage young people.
- Dawley Bank/ Malinslee – CCTV was installed in known antisocial behaviour hotspots along with significant lighting upgrades.
- Arleston – significant CCTV investment was made and basketball sessions started to engage local young people.

Underpinning this activity, there was a determined focus on improving housing standards in private rented housing and the targeting of long-term empty properties which were hotspots for antisocial behaviour. Action was also taken against houses in multiple occupation (HMOs) associated with antisocial behaviour, overcrowding and poor management practises.



Following this initial action, a further group of wards were identified for intervention using a data and intelligence led approach:

- Dawley & Aqueduct
- Donnington
- Hadley & Leegomery
- Haygate & Park
- Horsehay & Lightmoor
- Ketley
- Lawley
- Oakengates & Ketley Bank
- Overdale & The Rock
- Priorslee
- St Georges
- The Nedge
- Wrockwardine Wood & Trench

Each area for targeted intervention, will have a local Neighbourhood Action Plan (NAP) in response to issues and concerns raised by residents.

The Police, Crime and Sentencing Act 2022 came into force in 2022 giving local areas responsibilities to tackle serious violence. A serious violence duty subgroup reporting to the Building Safer, Strong Communities Board was created to drive an evidence-based response to the problems associated with serious violence. Home Office funding of £25k for the 2023/24 financial year was allocated to expand the current contract with the St Giles Trust to focus on the intervention and prevention of youth violence with a targeted focus on vulnerable children, young people and adults who are known to be most at risk of crime, exploitation and domestic abuse, and to reduce the number of young people not in education employment or training (“NEETS”).

The Building Safer Stronger programme has supported the reduction in crime and antisocial behaviour across the borough. For example, between 2023/24 and 2022/23 the number of crimes recorded by the Police in the borough fell by 10% from 16,599 to 14,996.

In terms of the other responsibilities of the Safer Telford & Wrekin Partnership Board, examples of actions completed include:

- The adoption of a new alcohol and drug strategy in 2023 to shape the commissioning of recovery services based on evidence and need.
- The introduction of new arrangements to enhance the governance of Domestic Homicide Review to ensure that the learning from them is fully implemented and embedded in policy and practice in a timely fashion.
- The ongoing development of data and intelligence to shape the work of the Safer Telford & Wrekin Board through intelligence-led decision making. This includes the development of PowerBi dashboards for the Building Safer Stronger programme that presents monthly analysis of crime and anti-social behaviour data from West Mercia Police and Telford & Wrekin Council.

# Telford and Wrekin the place



**Place of contrasts**  
Ironbridge World Heritage Site,  
Telford 'new town', two thirds of the area 'rural'



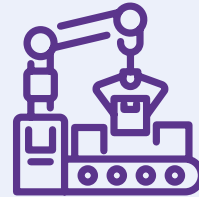
**Population of 188,900**  
Fastest growing population in the West Midlands (+3,000 in 2022) drawn by:  
Good value housing offer / Connectivity to the region and beyond / Attractive environment/open space



**Between 2011 and 2021, 35% increase in 65+ population**, the second highest local authority in England



**In 2021, 11.8% of the population from an ethnic minority group** – up from 7.3% in 2011.



**15.7% of borough jobs in manufacturing** (5.6% nationally)



**3.2m visitors with £220m economic benefit**



**18 neighbourhoods in the 10% most deprived nationally**



**Significant health inequalities with gap in life expectancy** between least and most deprived neighbourhoods of 8 years



**Skills gap to national position and between our communities** e.g. 38% at L4 in least deprived neighbourhood compared to 17% in most deprived neighbourhood

# Governance

The Safer Telford & Wrekin Partnership Board is part of a wider partnership landscape as illustrated in the diagram overleaf. The Partnership is accountable to the Telford & Wrekin Council Health & Wellbeing Board, which the Chair of the Safer Telford & Wrekin Partnership is a member of. The Health & Wellbeing Board is a statutory board and forms part of Telford & Wrekin Council’s formally constituted governance arrangements.

The work of the Partnership is closely linked and aligned to the work of the Safeguarding Adult Board and the Safeguarding Children Board. These two statutory boards work to ensure that local multi-agency safeguarding arrangements are in place.

For each of the strategic and statutory responsibilities for the Safer Telford & Wrekin Partnership Board there is a thematic group which takes the lead on an area of work. Two of these thematic groups also report to other groups due to cross-over responsibilities, with the Domestic Abuse Local Partnership reporting to the Safeguarding Adult Board and Safeguarding Children Board and the Child Exploitation and Child Sexual Exploitation Thematic group reporting to the Children Safeguarding Board.

The Safer Telford & Wrekin Partnership will produce an annual report which is shared across the partnership landscape and through the internal governance arrangements of the statutory partners, for example Telford & Wrekin Council’s Cabinet.



# Our Vision and Priorities

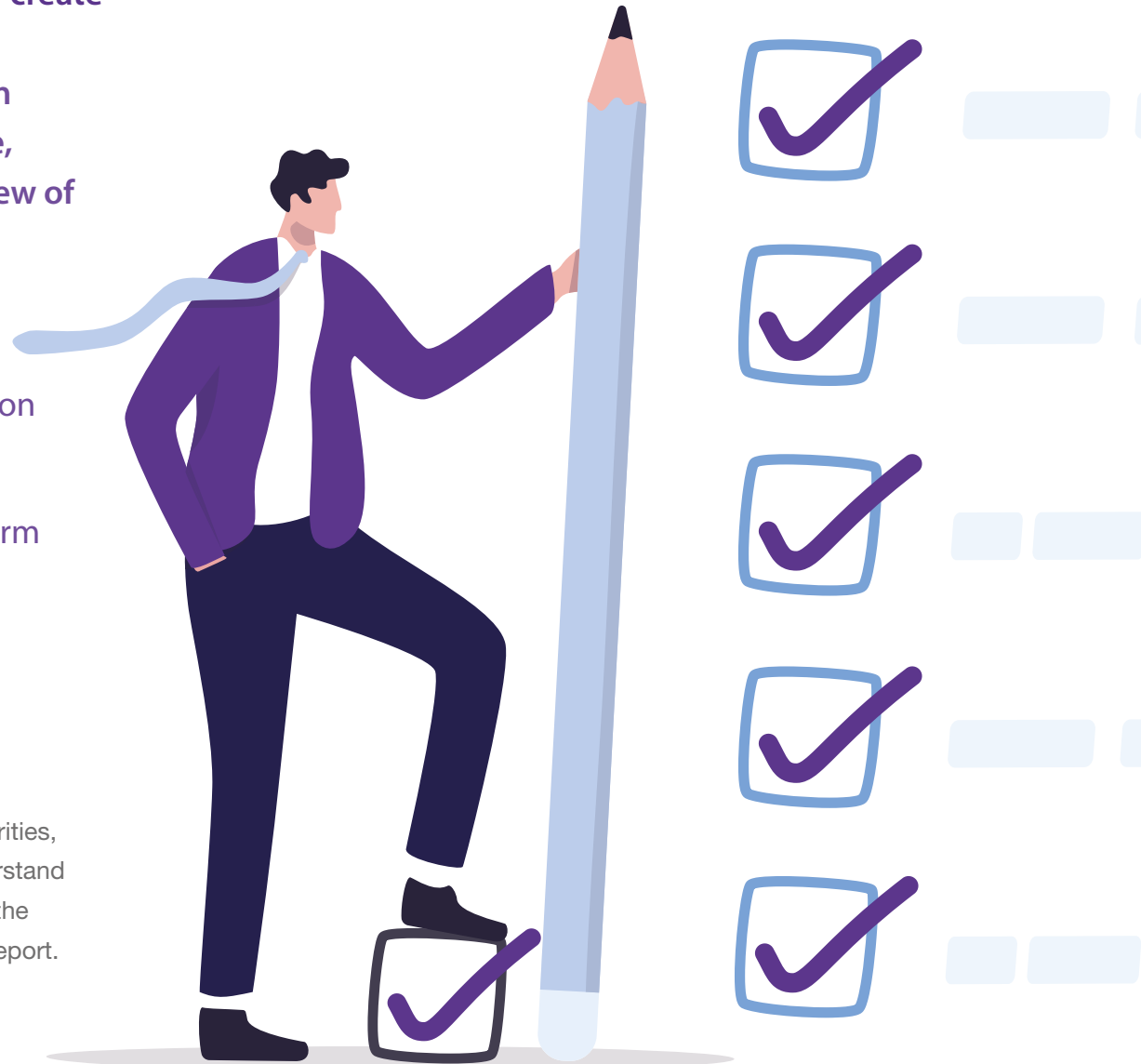
The Safer Telford & Wrekin Partnership has a vision to “create a safer and stronger community in Telford & Wrekin”.

To drive delivery of this vision five priorities have been adopted informed by analysis of data and intelligence, community consultation and engagement, and a review of progress against existing priorities.

These priorities are:

- Tackling child exploitation and child sexual exploitation
- Reducing the harm and impact of domestic abuse
- Addressing crime and antisocial behaviour in high harm areas
- Addressing serious youth violence
- Reducing deaths and serious injury on our roads

The Partnership will have strategic oversight of the delivery of these priorities, and, through the use of data and community engagement, seek to understand the impact that the activity to implement them is making a difference to the communities we serve. This will be set out in the Partnership’s Annual Report.



## Tackling Child Exploitation & Child Sexual Exploitation

Child exploitation occurs when a male or female under the age of 18 is manipulated, coerced or controlled to undertake criminal or sexual activity to the benefit or gain of someone else. This may involve the person being trafficked.

Following the publication of the report of the Independent Inquiry into Child Sexual Exploitation in Telford & Wrekin (IITCSE) significant progress has been made enhancing our multi-agency safeguarding arrangements to tackle child exploitation. We have retained child exploitation and child sexual exploitation as a priority because we need to ensure that these changes in practice are embedded and driving real changes in outcomes for victims and those at risk of exploitation. By retaining this as a priority we will ensure that this critical focus is retained.

As child exploitation evolves, we need to ensure that our policy and practice evolves too.

Our approach to tackling child exploitation and child sexual exploitation is shaped by “contextual safeguarding”. Understanding contexts relevant to the daily lived experience of our children and young people is key to reducing the risk of exploitation and improving outcomes. As children grow, they invariably become involved in social networks, relationships and environments outside of their family network. The majority of children do this in a safe and fulfilling way. However, all children can encounter individuals who seek to exploit their vulnerability or environments that exposes them to risk of harm. These environments and relationships can often serve to undermine and disempower parents and carers in the lives of children.

This is a shared priority with the Safeguarding Children Board, and it will be driven through the Child Exploitation and Child Sexual Exploitation group reporting to the Safer Telford & Wrekin Partnership Board and the Safeguarding Children Board. It will work on four themes:

Theme	Example areas of planned intervention and action
<b>Understand and identify</b>	To ensure that we have effective and well-established information sharing and risk assessment mechanisms in place to identify those at risk of or experiencing exploitation.
<b>Prevent</b>	To prevent children and young people experiencing any risk of harm due to exploitation in the first place.
<b>Action and support</b>	To work together across the partnership to provide support to exploited children, so they are helped, protected and listened to and that perpetrators are held to account for their action.
<b>Disrupt exploitation and bring to justice</b>	To identify, disrupt and prosecute those who are intent in exploiting children.

## Reducing the harm and impact of Domestic Abuse

Domestic abuse includes:

**PHYSICAL OR  
SEXUAL ABUSE**

**CONTROLLING OR  
COERCIVE BEHAVIOUR**

**FORCED MARRIAGE OR  
HONOUR-BASED VIOLENCE**

**CHILD TO PARENT  
AND CARER ABUSE**

**VIOLENT OR  
THREATENING  
BEHAVIOUR**

**ECONOMIC OR  
FINANCIAL ABUSE**

**PSYCHOLOGICAL,  
EMOTIONAL OR OTHER  
ABUSE**

**FEMALE  
GENITAL  
MUTILATION**

Domestic abuse:

- happens across different types of relationships, and is not limited to people who are or have been in an intimate personal relationship, or who live together;
- occurs across household and family relationships, those with parental relationships, and between relatives and includes ex-partners;
- disproportionately affects women more than men, given their experience of repeat victimisation, violence and non-physical abuse, while acknowledging that there is not one type of victim and that needs are individual; or
- male domestic abuse is underreported by male victims for many reasons including shame, denial, fear, to protect children, religious beliefs and lack of resources.

Our needs assessment tells us that:

- there are an estimated 25,680 adult victims in the Borough who have experienced domestic abuse at some point in their lives since the age of 16;
- 17,130 or 67% of these victims are estimated to be female; and,
- annually, 7020 adult victims will have experienced domestic abuse at some point in the last year:
  - o 68% of them were female and 32% estimated to be male
  - o 5,160 were victims of inter partner violence
  - o 2,295 visible adult victims

There is a clear increase in need and demand for services and support. For example, the Council’s housing team has seen approaches almost double in recent years. For this reason and because of the impact this has in our community, Domestic Abuse is a priority for the Safer Telford & Wrekin Partnership.

This priority will be driven by the Domestic Abuse Local Partnership shaped by Domestic Abuse Strategy which sets out a clear framework for action, against the following four themes, presented with examples of the actions that will be delivered:

Theme	Example areas of planned intervention and action
<b>Partnership</b> – intelligence-led, outcomes focussed change	Ensuring that survivors are listened to routinely with their expertise have a wide influence and so lived experience is an embedded authentic voice.
<b>Prevention</b> – education, intervening early changing attitudes	That all education provision further develop, expanding their reach and impact, and that all settings identify a Domestic Abuse Champion and sign up to complete the Purple Pledge
<b>Provision</b> – services, support and safer accommodation	That effective, responsive, integrated domestic abuse service and support offer is commissioned to improve outcomes for victims, survivors and families , which strongly connects with existing services, e.g. children, young people and family services, adult social care, substance misuse services (STaRS), housing support, and mental health services.
<b>Pursuing and protection</b> – justice, recovery and ongoing protection	Joined up processes are enabled to support individuals and families through referrals, interventions and criminal justice pathways – ensuring that victim’s voices are clearly heard throughout

## Tackling crime and antisocial behaviour in high harm areas

Through community engagement, people consistently tell us that feeling safe in their local neighbourhood is a key driver of their quality of life and health and wellbeing. Our needs analysis shows that progress has been made reducing crime and antisocial behaviour in the borough. For example, between 2023/24 and 2022/23:

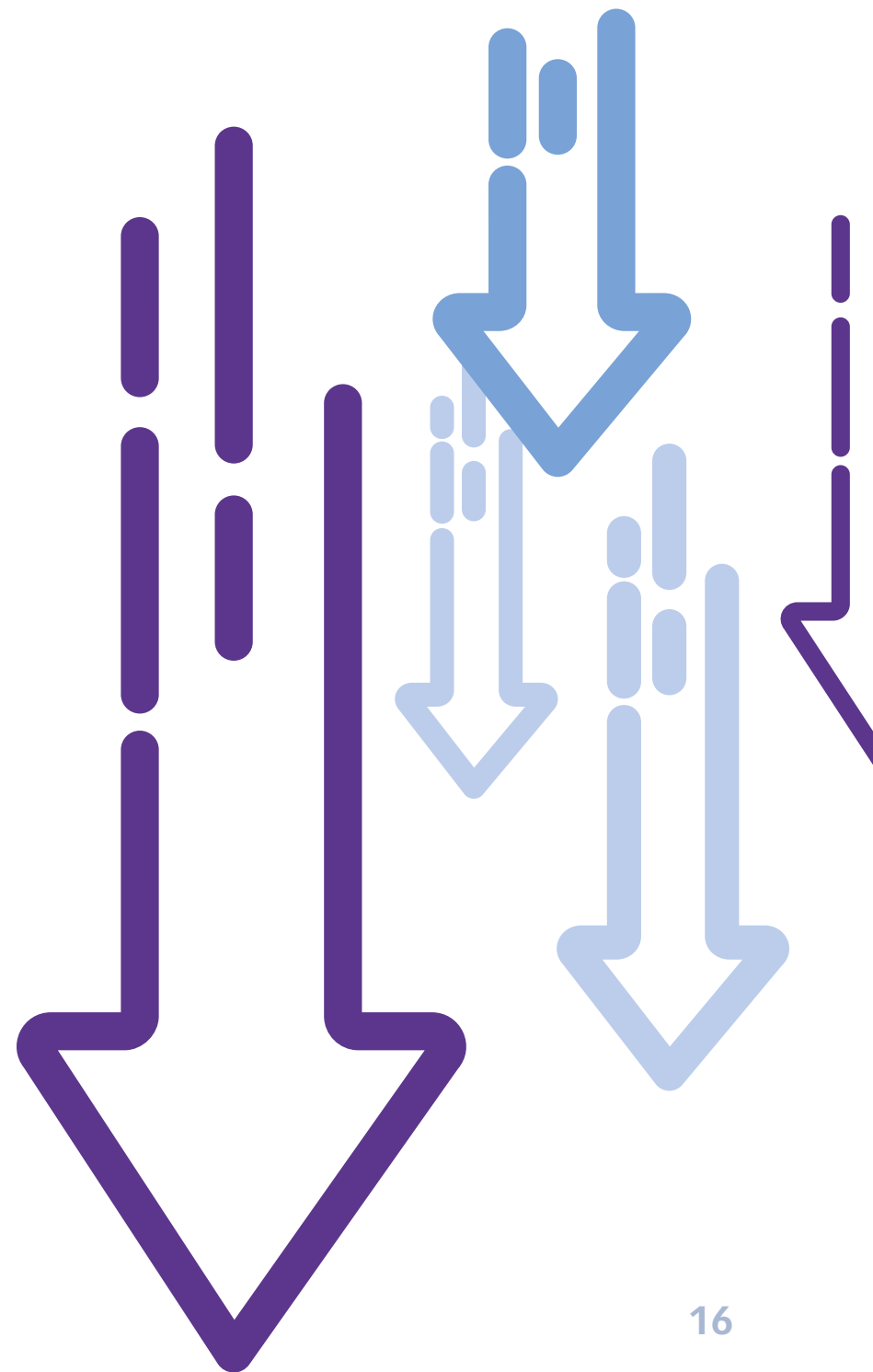
- the number of crimes recorded by West Mercia Police in the borough fell by 10% from 16,599 to 14,996;
- the number of anti-social behaviour incidents recorded by West Mercia Police fell by 26% from 3,534 to 2,628; and,
- the number of anti-social behaviour incidents recorded by Telford & Wrekin Council fell by 30%.

Importantly, progress has been made in neighbourhoods which have typically experienced high rates of crime and antisocial behaviour, the number of crimes recorded by the Police in the following areas has fallen between 2023/24 and 2022/23

- Woodside a 14% reduction from 1,038 to 895;
- Madeley and Sutton Hill a 20% reduction from 1,587 to 1,275; and,
- Arleston & College a 24% reduction in from 1044 to 797.

Despite this progress, those areas with greater levels of social deprivation continue to experience higher rates of crime and antisocial behaviour and in this strategy, we restate our determination to tackle crime and antisocial behaviour in high harm areas.

In driving forward this priority, the Building Safer, Stronger Communities programme will continue to seek to address the root causes of crime, rather than simply tackle the crime itself. This programme has started to provide the foundations for social regeneration and investment decisions. Using an intelligence-led approach informed by research, data and insight, the focus will be on the following themes.





Theme	Example areas of planned intervention and action
<b>Education &amp; Skills</b>	<ul style="list-style-type: none"> <li>• Ensuring effective alternative provision for vulnerable children and young people.</li> <li>• Build resilience in children and young people by further developing a coordinated training offer, across all agencies, for schools around Contextualised Safeguarding.</li> <li>• Deployment of PCSOs in schools to provide a link between schools and community activity.</li> </ul>
<b>Housing Standards</b>	<ul style="list-style-type: none"> <li>• Target long term empty properties with a view to bringing 10% back into use in line with our empty property strategy.</li> <li>• Prioritise targeting long term empty properties subject to serious ASB.</li> <li>• Identifying Houses in Multiple Occupation (HMOs) associated with anti-social behaviour, overcrowding and poor management practises and taking appropriate action.</li> </ul>
<b>Crime Reduction</b>	<ul style="list-style-type: none"> <li>• Situational crime prevention audits for each locality.</li> <li>• Creating a safe Night time Economy and Use intelligence and data to identify crime hotspots related to; <ul style="list-style-type: none"> <li>• Licenced premises</li> <li>• Taxis</li> <li>• Violence against women and girls</li> </ul> </li> </ul>
<b>Environmental Crime &amp; Anti-Social Behaviour</b>	<ul style="list-style-type: none"> <li>• Identify problematic ASB and environmental crime areas/hot spots and increase enforcement activity through deployment of new community action teams (CATS) and SNT and capture impact through new KPI dashboards for ASB.</li> <li>• Identify target hardening measures in vulnerable areas and fund interventions from the Safer &amp; Stronger communities programme.</li> </ul>
<b>Community Resilience</b>	<ul style="list-style-type: none"> <li>• Re-invigorate and increase the number of Telford's Neighbourhood Watch Schemes to rebuild relationships with our communities. Incorporating a focus on the Police Charter priorities into the area action plans.</li> <li>• Work in partnership with the voluntary sector to increase support to families in need alongside other third sector agencies including potential for asset transfer to sustain the provision of local services.</li> </ul>

## Addressing serious youth violence

Between 2021/22 and 2022/23 there was an increase in the serious youth violence of 10%, to 148 incidents. In response, a Serious Violence Strategy was developed with a specific focus on serious youth violence. This included a series of interventions to address the issue:

- Commissioning St Giles – a charity using expertise and real-life past experiences to empower people who are not getting the help they need – to deliver mentoring for young people and support sessions for partners
- Climb intervention – funded by West Mercia’s Police & Crime Commissioner delivered by the Children’s Society to stop young people from being drawn into criminal activity, exploited or exposed to criminal activity.
- Operation Sceptre – run by West Mercia Police to tackle knife crime including visiting schools to talk to students, liaising with shops who sell knives, and providing members of the public to hand in unwanted knives to the Police.

These and other initiatives, have had impact on the rate of serious youth violence, with a 21.6% reduction in the rate between 2022/23 into 2023/24. It is essential that do all we can to continue to tackle this serious crime and support young people from them becoming involved in a crime that destroys lives. Our approach will be informed by a public health approach, driven through five principles:

Theme	Example areas of planned intervention and action
<b>Collaboration</b>	We will engage with a diverse range of partners to successfully work together towards the shared goal of tackling and preventing violence.
<b>Co-production</b>	We will work towards a partnership that listens and reflects all local partners perspectives and importantly meaningfully involves the community in solutions.
<b>Cooperation in data and intelligence sharing</b>	We will establish a data sharing process that enables an evidence-based response to tackle serious violence.
<b>Counter-narrative development</b>	We will work to develop a delivery plan that creates credible and trusted alternatives for all and celebrates the strength of our communities.
<b>Community consensus</b>	Lies at the heart of place based public health approach and we will work with communities and groups most at risk to empower them to become involved in developing solutions.

## Reducing deaths and serious injury on our roads

Whilst the 2022 rate of killed and seriously injured casualties (62.4) on the borough's roads remain significantly lower than the national rate (94.5), there was an increase in the rate from 2020 (42.6) to 2021 (62.9). We want to sharpen our activities to reduce deaths and serious injury on the borough's roads and to make our roads as safe as possible. Our approach will be evidence-led, using analysis of incident hotspots to inform our intervention through the following three themes:

Theme	Example areas of planned intervention and action
<b>Education</b>	The team manage and deliver a range of education, training and publicity programmes throughout the year, targeted at priority groups of road users who are identified as being at greatest risk of harm, based on casualty and collision data.
<b>Engineering</b>	Engineering matters in relation to road safety are the responsibility of Traffic Management Advisors (TMAs) who work within the Road Safety team and act as the focal point for professional advice and police representation in relation to current and proposed highway schemes, highway and traffic legislation and safety matters.
<b>Enforcement</b>	The team manages a structured speed enforcement programme, operating within strict, self-imposing guidelines, covering casualty reduction but also community concern.

